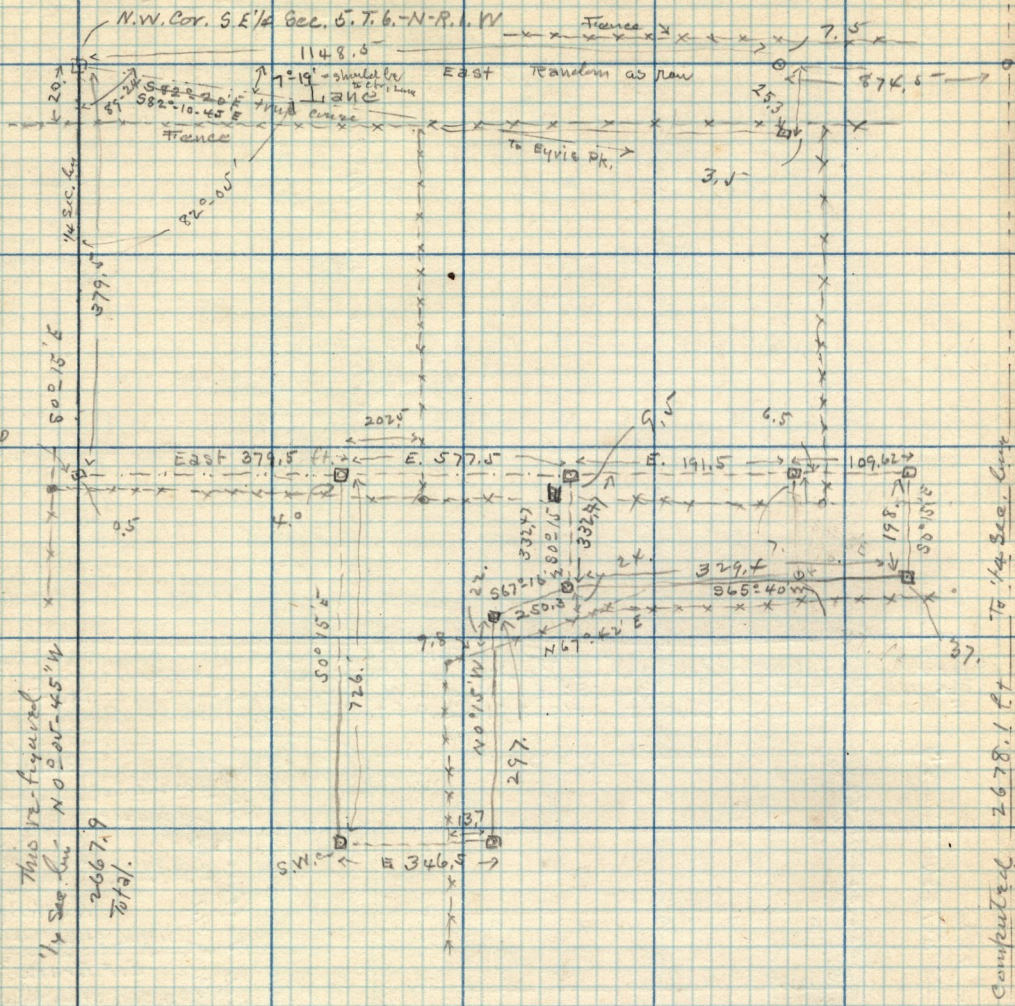


Sept 20-1903
 Survey for Martha M. Dean.

Self-Stoddard & Shaw

(See page 152)

See book G. page 21
 See page 60 this book



This is figured
 1/4 Sec. Cont. N 0° 05' 45" W
 2667.9
 Total.

See page 60 this book.

Computed 2678.1 ft
 along center of
 Washington Dr.

A 315+29.14
 B 79+82.67
 from East

1987.0

* and look to me for all expenses of field work.
 Signed H. B. Maxson

90° 54' 15"